

Simple Soaker™

LANDSCAPE & GARDEN SPRINKLING SYSTEM

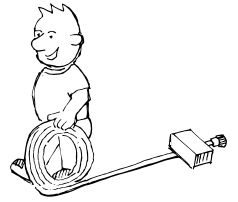
Installation & Operating Instructions

Simple Soaker is so easy to use, you might not even need this 10-step guide. But if you do, just follow your new friend "Nelson" through this step-by-step.

Step 1: Roll out the tubing.

To avoid kinks in the tubing, place something heavy, such as a brick, on one end of the tubing and continue to roll out the remainder. Then take a break, because you have just finished the hardest step.

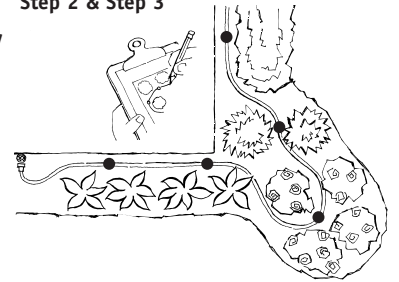
Step 1



Step 2: Lay the tubing through the area you want watered.

It's not necessary, but you could draw yourself a map. Start by connecting the end of the tubing directly to your outdoor faucet or to a hose connected to the faucet. Next, lay the tubing through the area you want watered. Now, stand back and admire your progress.

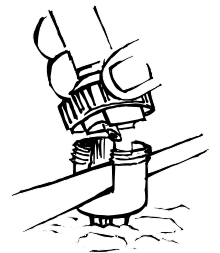
Step 2 & Step 3



Step 3: Placement of the stakes.

Grab a sprinkler from the box. They are the black spikey-looking things. Unscrew the cap from the stake by twisting the vertical grooves on the cap to the left. Repeat with remaining 4 sprinklers. Gently push the stakes into the ground at the places that you would like the sprinklers to be located. Place the tubing through the slot at the top of each stake. Your Simple Soaker nozzles have an adjustable spray distance of 1 foot to 12 feet so make sure you have placed each stake a minimum of 1 foot apart and no more than 12 feet. **Note:** You do not have to use all 5 of the sprinklers provided. Your system will work just as well with 3 or 4.

Step 4



Step 4: Assemble the sprinklers.

It's time to get pierced. No, not you...the tubing. With the tubing placed through each stake, screw the caps back onto the stakes, making sure that the plastic bar with the metal piercing unit fits into the slot on the stake. Do not over-tighten. It is not important which direction the metal piercing unit opening faces.



Step 5: Turn on the water.

ATTENTION: Very important step! Turn the water on slowly until the spray diameter has stopped increasing. Isn't this easy?

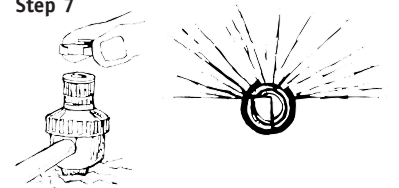
Step 6



Step 6: Adjust the spray.

With just a couple of twists of your fingers, you can change the distance of the spray. So even if you are all thumbs, like Nelson, it's easy to adjust the nozzles just the way you want them. To adjust the distance of the spray, grip the top, larger, vertical grooves on the nozzle and rotate counter-clockwise to increase the distance and clockwise to decrease. **Note:** If water leaks from just below the nozzle, rotate the nozzle a couple of turns clockwise until the leaking stops.

Step 7



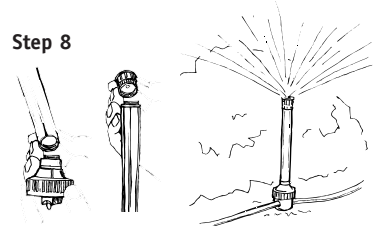
Step 7: It's a "snap!"

The Simple Soaker was designed to put water where you want it. That's why we've included deflectors that change the full-circle spray to a half-circle. Simply "snap" them onto the very top of the nozzle and presto! You have a half circle! **HINT:** The deflector must be removed in order to adjust the spray or to unscrew a nozzle. Simply "unsnap" it!

Step 8: Want to go higher?

If you need to water taller plants, you can raise the spray with the enclosed risers. Unscrew the nozzle from the cap, making sure to grip the lower, smaller, vertical grooves on the nozzle when unscrewing, and screw the riser onto the cap. Then screw the nozzle onto the top of the riser. You can even use more than one riser on each sprinkler for really tall plants. Just screw them together.

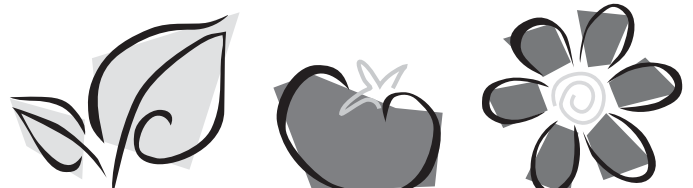
Step 8



Step 9: Automating your Simple Soaker.

Nelson knows the Simple Soaker is easy to use, but he wanted to make it worry-free too. That's why we have included an automatic water timer. Attach the timer at your faucet before your Simple Soaker. To set the timer, push in the white cap and turn it counter-clockwise so that the desired time lines up with the arrow on the top of the black cylinder (To stop the timer during a watering cycle, push and turn the cap to OFF. For untimed watering, push and turn the cap to ON.) This is a mechanical timer that measures by water flow. It is based on estimated time increments and will vary with water pressure.

Step 9



Simple Soaker™

LANDSCAPE & GARDEN SPRINKLING SYSTEM

Step 10: Having regrets about your piercings?

Need to move a sprinkler? No problem. We've included 8 "goof" plugs to patch your previous spots, or any goofs that happen along the way. Pinch the sides of the tubing and hold firmly when inserting a plug.

Turn it on and take a nap. Repeat as often as desired.

Additional tips:

Make your new Simple Soaker do a "disappearing act." Sure, you're proud of your new Simple Soaker, but you may want it to blend in to the landscape. You can cover the tubing with mulch or rock, or you can dig a shallow trench when you install the system. Make sure the nozzles sit above ground level.

Need more than one system but only have one faucet? Eliminate the hassle of connecting and disconnecting multiple Simple Soaker systems or a Simple Soaker and a hose by attaching a "Y" connector with shut-off valves (not included) to your faucet.

Care and maintenance of your Simple Soaker.

To ensure that your Simple Soaker lasts as long as you do, once a year, dismantle your system and flush with water to remove debris. During freezing weather, detach the tubing from the faucet and allow the water to drain from the system. It is not necessary to store this product indoors during colder months. Detach automatic water timer from faucet during freezing weather. The Simple Soaker was designed to be run at a lower water pressure. If you have high water pressure, do not run this system with the water completely on. If you are using a long hose to connect your Simple Soaker to your faucet, you may experience a decrease in water pressure and the diameter of spray.

Step 10

